



# DOWNLOADPLAYER 7

## QUICK START GUIDE



# CONTENTS

[Click the section you wish to view](#)

**3**

INSTALL

**10**

REQUESTS

**5**

CONNECTION

**11**

EVENTS

**7**

OVERVIEW

**12**

USER  
PLAYLIST

**8**

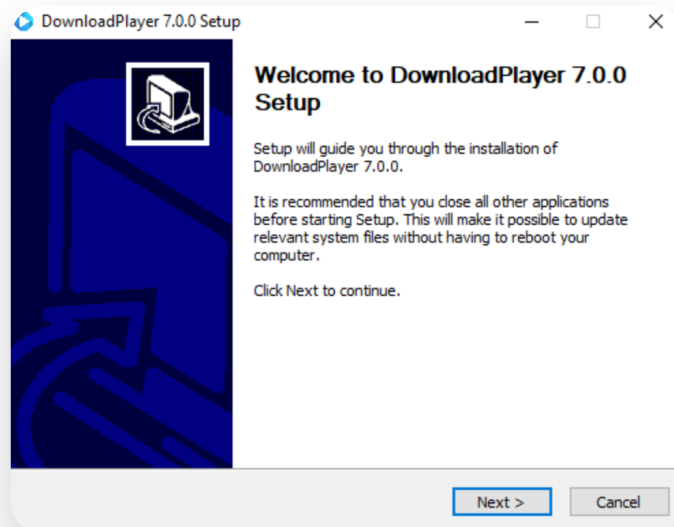
NAVIGATION

**13**

SUPPORT

# INSTALL

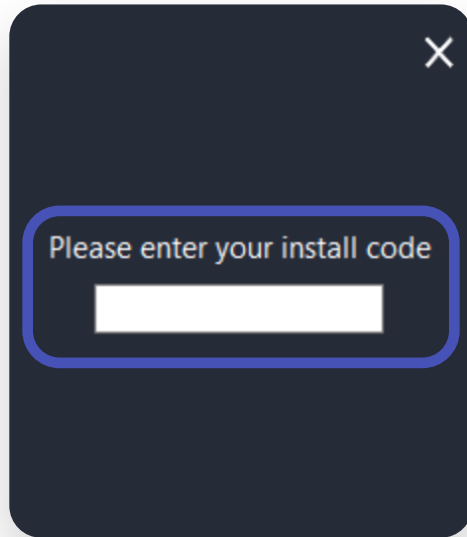
- 1 You'll receive an email with a link and install code.
- 2 Download the link onto the Windows PC or Tablet.
- 3 Once downloaded, run the installer.



- 4 Select where you wish to install, ensure there is enough disk space available for your music, minimum 10GB per channel.

# INSTALL

- 5 Once installed, the player will launch automatically, enter the install code from the email into the box and click OK.

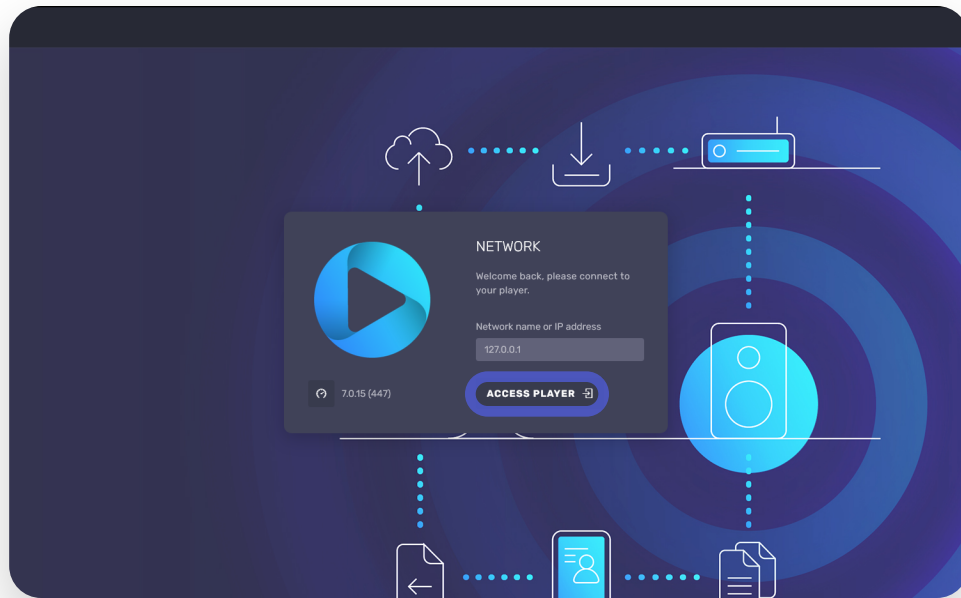


- 6 The player will load, download and playback automatically, depending on your internet speed you should be playing in a few minutes.

# CONNECTION

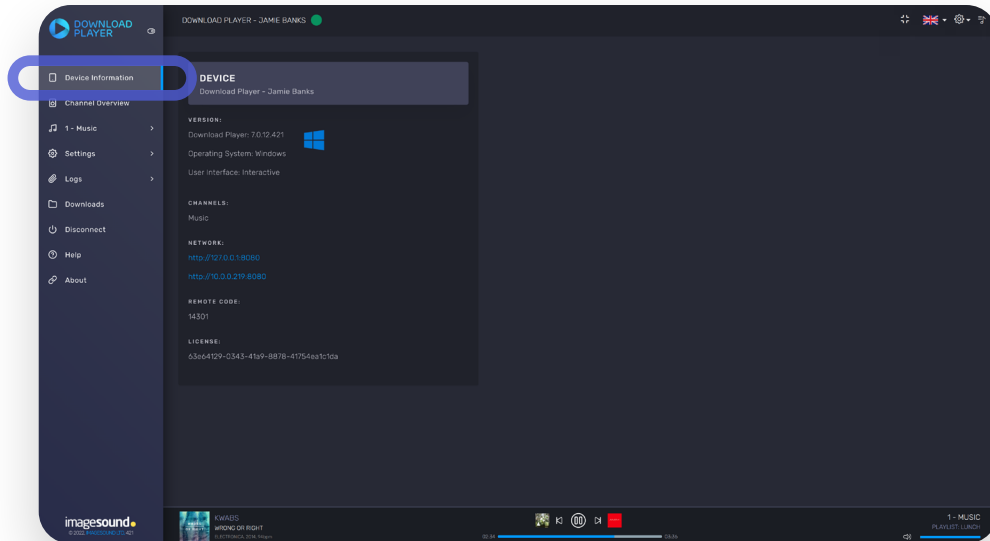
- 1 Your player can be accessed from the desktop app or via a network connection on any other device that supports a modern internet browser.

If running on your Windows 10 desktop you can simply click '[Access Player](#)' to open the user interface.



# CONNECTION

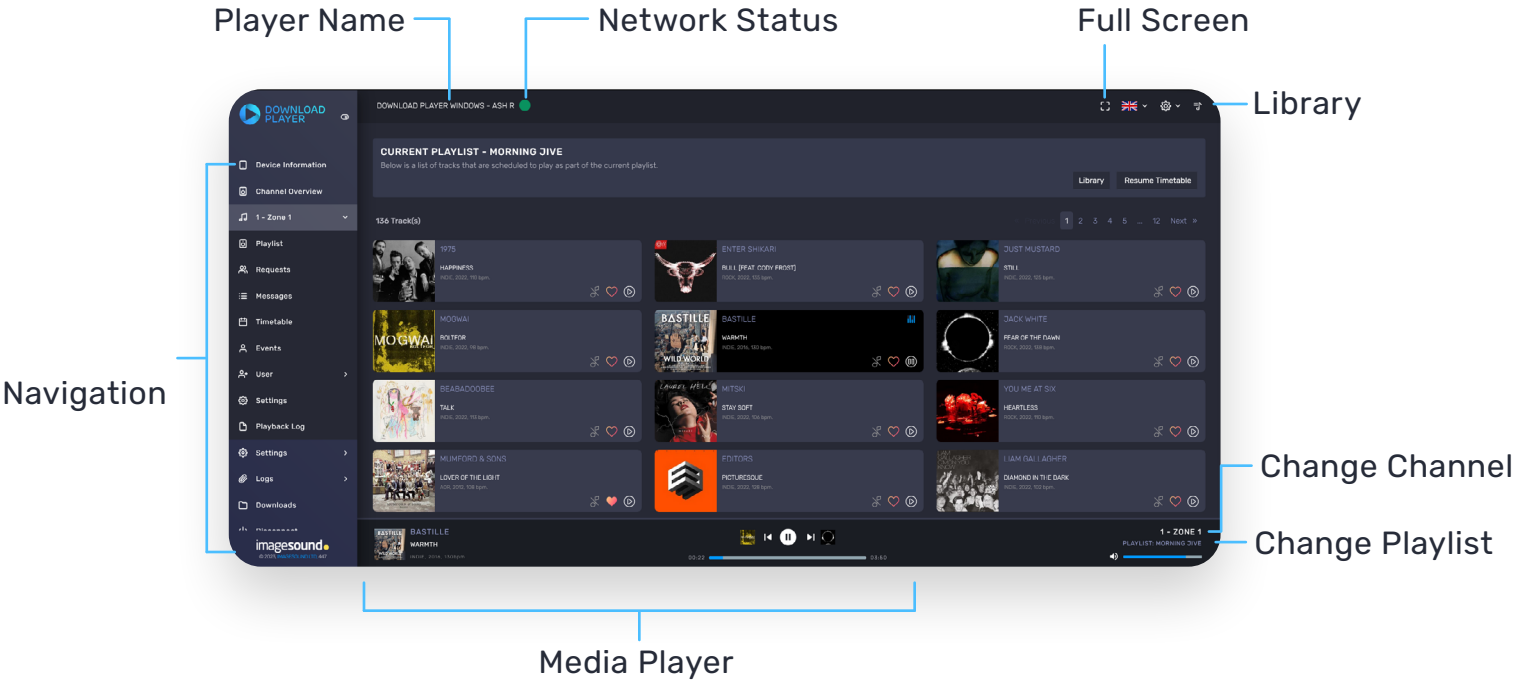
- 2 If you're connecting on a remote device, you will need a pairing code which you can get from your device information.



- 3 To connect via another device, simply ensure you are on the same or routable network to the PC, then enter the PC name or IP address with a port of 8080.

**Example:** `http://192.168.1.1:8080` and enter the pairing code which will be saved for your next connection.

# OVERVIEW



# NAVIGATION

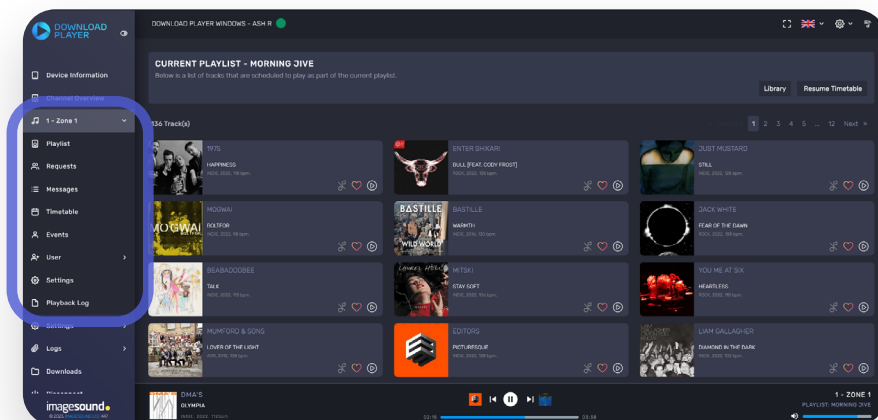
1

All 'zones' will be displayed in the navigation sidebar.

2

Selecting the zone shows the playlist and actions:

- Playlist:** Displays the current playlist.
- Requests:** Displays any requests from customers via the Discover Music App.
- Messages:** Displays any adverts or messaging scheduled.
- Timetable:** Displays the current timetable for today.
- Events:** Displays the ondemand playlists to select.
- User:** Display user playlists, favorite and disabled music.
- Settings:** Displays any setting for the given channel.
- Playback Log:** Displays tracks played.





# NAVIGATION

3

## Settings:

General: Displays the general settings dialog.

Downloads: Displays the download settings dialog.

4

## Logs:

System: Displays all the logs for the player.

Downloads: Displays the music download logs.

Connection: Display the connectivity.

5

## Disconnect:

Disconnects from the player and displays the connection screen.

6

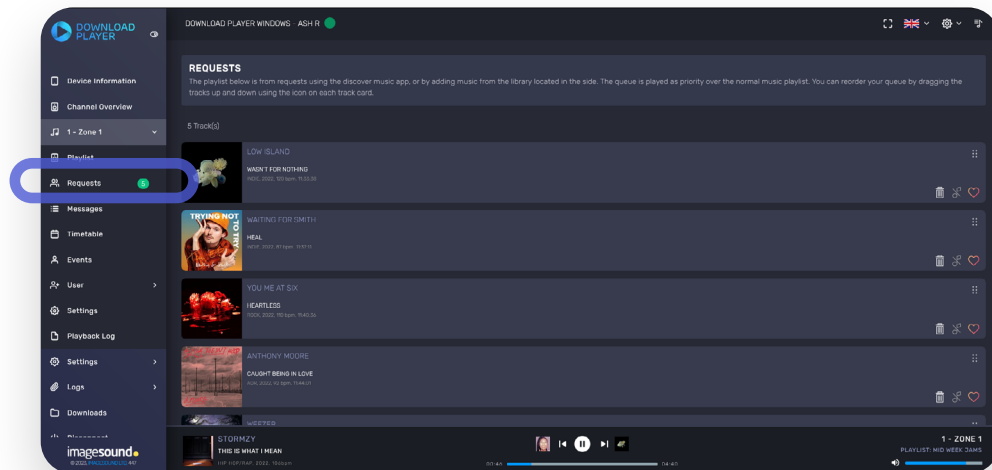
## About:

Shows the about dialog, version, license key and supporting app such as Discover and Remote.

# REQUESTS

1

The playlist below is from requests using the discover music app, or by adding music from the library located in the side. The queue is played as priority over the normal music playlist. Users can also re-order songs within their requests tab to set priority.



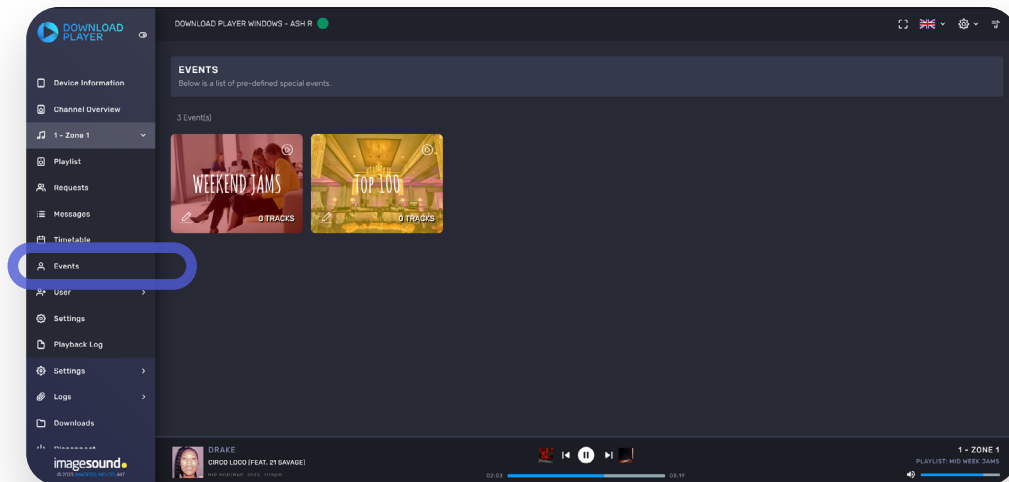
# EVENTS

1

Events provide instant access to on-demand playlists for your venue.

2

Select an event to load the playlist, you may select the options provided to play, shuffle, and set how to resume.



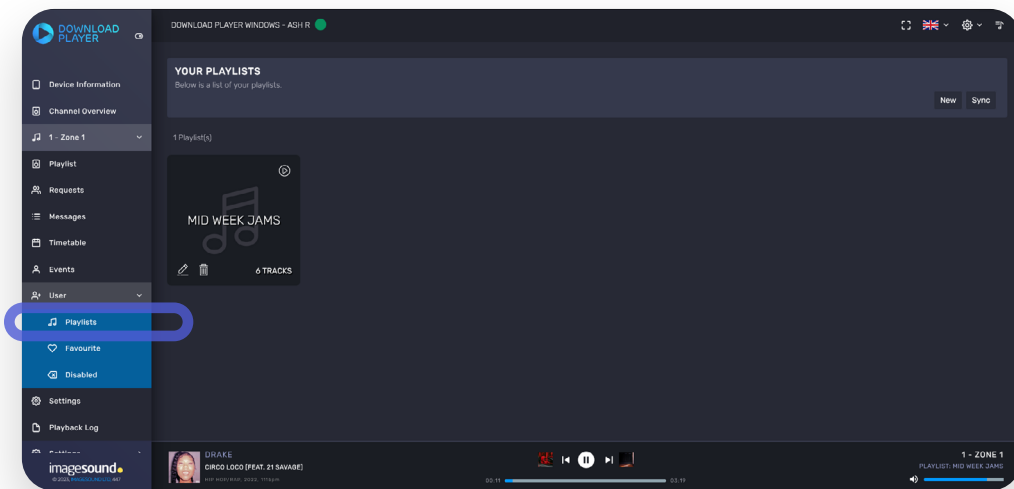
# USER PLAYLIST

1

You may create your own playlists from the library provided for each channel.

2

Click on the channel required and user item on the navigation bar.



# SUPPORT

## **24/7 HELPLINE**

[support@radiopark.de](mailto:support@radiopark.de)

+4940-4309 37-0